

Toluidine Blue Stain Kit

Product name: Toluidine Blue Stain Kit
Catalog No.: TASS07

Introduction:

Toluidine blue is a kind of metachromatic dye that have been used to screen the tissue structures usually. Metachromasia, tissue elements staining a different color from the dye solution, is due to the pH, dye concentration and temperature of the basic dye. Blue or violet dyes will show a red color shift, and red dyes will show a yellow color shift with metachromatic tissue elements. Mast cells stain metachromatically with toluidine blue with greater intensity in cells containing smaller granules. Therefore, Toluidine blue stain is usually used to detect mast cell in the tissue.

Form:

Catalog No.	Size
TASS01-125	125ml

Kit Contents (for 250ml kit):

Kit Contents	Format	Recommend time	Storage
toluidine blue working solution	Ready to Use,125ml	10-15 minutes.	25-28°C
Control slide x 2	Pig skin and others	--	25-28°C
Reagent necessary but not included: 1. 100% Alcohol			

Staining Protocol Recommendations:

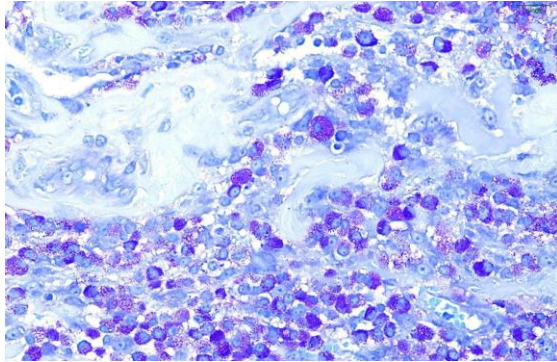
1. Deparaffinize and hydrate sections to distilled water.
2. Stain sections in toluidine blue working solution for 10-15 minutes.
3. Wash in distilled water, 3 changes.
4. Dehydrate quickly through 95% and 2 changes of 100% alcohol.
5. Air dry.
6. Clear in xylene or xylene substitute, 2 changes, 3 minutes each.
7. Coverslip with resinous mounting medium.



Results:

Mast cells ----- violet/red purple.

Background ----- blue.



Positive Controls:

Mast cell tumor, skin (hair follicle), bone (epiphyseal plate)

Storage and Stability:

Please read the kit contents and follow the storage condition. The user must validate any other storage conditions. When properly stored, the reagent is stable until the date indicated on the label. Do not use the reagent beyond the expiration date. If unexpected results are observed which cannot be explained by variations in laboratory procedures and a problem with the reagent is suspected, contact Technical: info@biotna.net