

Nissl Stain Kit

Product name: Nissl Stain Kit
Catalog No.: TASS04

Introduction:

Nissl stain is a commonly used method to identify neurons in the brain and spinal cord. The staining method can indicate the Nissl substance in the cytoplasm of neurons on paraformaldehyde or formalin-fixed, paraffin embedded tissue sections. The Nissl body will be stained purple-blue. Nissl stain is usually used as a counter stain for other staining methods in neuropathology, such as Luxol-Fast blue stain or immunohistochemical (IHC) stain.

Form:

Catalog No.	Size
TASS04-125	125ml
TASS04-250	250ml

Kit Contents (for 125/250ml kit):

Kit Contents	Format	Recommend time	Storage
Cresyl violet solution	Ready to Use,125/250ml	10 minutes.	25-28°C
Control slide x 2	Brain	~	25-28°C
Reagent necessary but not included: 1. 100% Alcohol 2. Xylene			

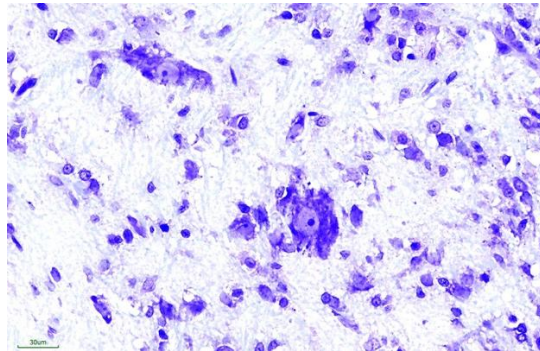
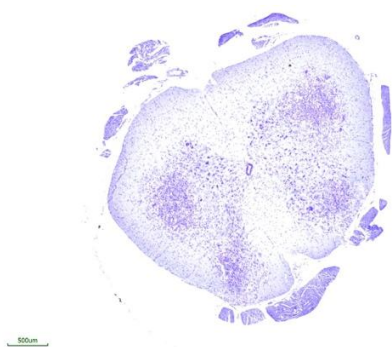
Staining Protocol Recommendations:

1. Deparaffinize and hydrate slides to distilled water.
2. Stain in cresyl violet solution for 10 minutes.
3. Differentiate in running tap water for 2-5 minutes and check microscopically for best result.
4. Air dry.
5. Clear in xylene 2x5 min.

6. Mount with permanent mounting medium.

Results:

Neuron (Nissl body) ----- violet to blue



Positive Controls:

Brain tissue or spinal cord

Storage and Stability:

Please read the kit contents and follow the storage condition. The user must validate any other storage conditions. When properly stored, the reagent is stable until the date indicated on the label. Do not use the reagent beyond the expiration date. If unexpected results are observed which cannot be explained by variations in laboratory procedures and a problem with the reagent is suspected, contact Technical: info@biotna.net