

Luxol-Fast blue Stain Kit

Product name: Luxol-Fast blue Stain Kit (Myelin Stain)

Catalog No.: TASS19

Introduction:

Luxol-Fast blue staining of myelin/myelinated axons on formalin-fixed, paraffin-embedded brain and spinal cord tissue sections, as well as frozen sections. The myelin, including phospholipids, will be stained blue to green, and the neurons will be stained violet. This stain is commonly used for identifying the basic neuronal structure in brain or spinal cord tissue.

Form:

Catalog No.	Size
TASS19	125ml

Kit Contents (for 125ml kit):

Kit Contents	Format	Recommend time	Storage
Luxol fast blue solution	Ready to use, 125ml	overnight	25-28°C
Cresyl violet solution	Ready to use, 125ml	5-10 minutes.	25-28°C
Lithium carbonate solution	Ready to use, 125ml	30 seconds.	25-28°C
Control slide x 2	Brain	~	25-28°C

Note:

1. Preparing 5-7um thick sections will be more satisfactory.

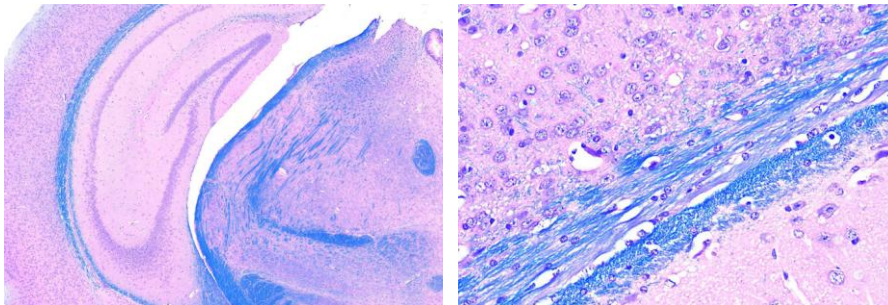
Staining Protocol Recommendations:

1. Deparaffinize and hydrate to 95% ethyl alcohol (Frozen/vibratome sections may need to have de-fat step: place sections directly into 1:1 alcohol/chloroform for a few hours/overnight and then hydrate back 95% ethyl alcohol).
2. Leave in luxol fast blue solution in 56°C oven overnight (for frozen sections, not longer than 16 hours).
3. Rinse off excess stain with 95% ethyl alcohol.
4. Rinse in distilled water.
5. Differentiate the slides in the lithium carbonate solution for 30 seconds.

6. Continue differentiation in the 70% ethyl alcohol for 30 seconds.
7. Rinse in distilled water.
8. Check microscopically to see if gray matter is clear and white matter sharply defined.
9. Repeat the differentiation steps (step 5-7) if necessary.
10. When differentiation is complete, place in distilled water.
11. Counterstain in the cresyl violet solution for 5-10 minutes.
12. Rinse in distilled water (don't rinse in 70% alcohol which will clear off fast blue staining).
13. Differentiate the slides in 95% ethyl alcohol for 5 minutes (check microscopically).
14. Changes of absolute alcohol 2 times, 5 minutes each.
15. Changes of Xylene 2 times, 5 minutes each.
16. Mount with resinous medium.

Results:

Myelin, including phospholipids ----- blue to green
 Neuron ----- pink to violet



Positive Controls:

Brain, spinal cord

Storage and Stability:

Please read the kit contents and follow the storage condition. The user must validate any other storage conditions. When properly stored, the reagent is stable until the date indicated on the label. Do not use the reagent beyond the expiration date. If unexpected results are observed which cannot be explained by variations in laboratory procedures and a problem with the reagent is suspected, contact Technical: info@biotna.net