



CD31 antibody

Product name: CD31 antibody

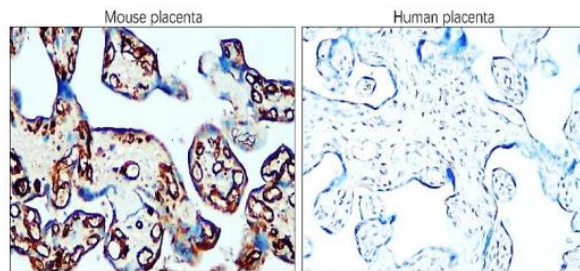
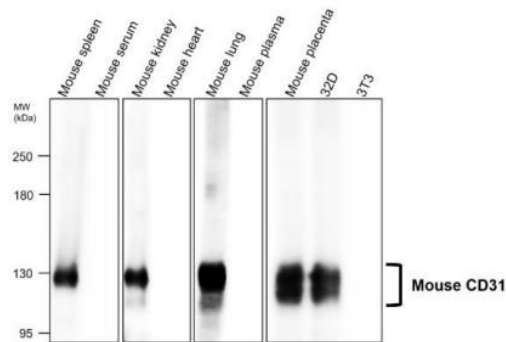
Catalog No.: TACD31-253

Introduction:

Catalog No.	TACD31-253
Size	20µl
Gene Description	platelet/endothelial cell adhesion molecule 1
Clonality	Polyclonal
Host	Rabbit
Species	Mouse specific
Recommended Applications Dilutions	Western Blot 1:500- 1:1500 Immunofluorescence 1:300 - 1:500 Immunohistochemistry (Frozen) 1:100 - 1:300 Immunohistochemistry (Paraffin) 1:100 - 1:300 Flow Cytometry 1:50 - 1:150
Storage Buffer	100mM Tris Glycine, 20% Glycerol (pH7) 0.025% ProClin 300 was added as a preservative
Concentration	1.5 mg/ml
Purity	Affinity column purified
Storage	Store at 4°C for short term storage. Long time storage is recommended at -20°C
Notes	Gently mix before use. Optimal concentrations and conditions for each application should be determined by the user.

Storage and Stability:

Please read the kit contents and follow the storage condition. The user must validate any other storage conditions. When properly stored, the reagent is stable until the date indicated on the label. Do not use the reagent beyond the expiration date. If unexpected results are observed which cannot be explained by variations in laboratory procedures and a problem with the reagent is suspected, contact Technical: info@biotna.net

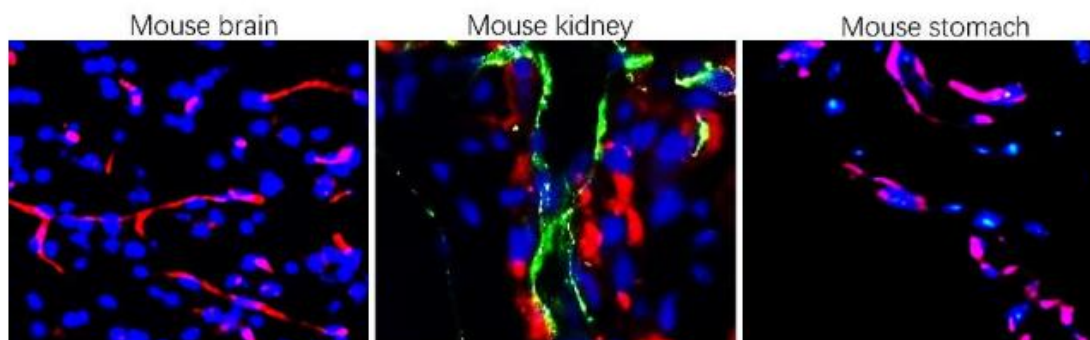


Anti-CD31 antibody at 1/1000 dilution

Lysates at 30 µg per lane.

This blot was produced using a 5% SDS-PAGE. NC membrane was then blocked for an hour before being incubated with TACD31-253 overnight at 4°C.

Immunohistochemical analysis of paraffin embedded mouse and human placenta tissue labeling mouse CD31 antibody with TACD31-253 at 1/200.

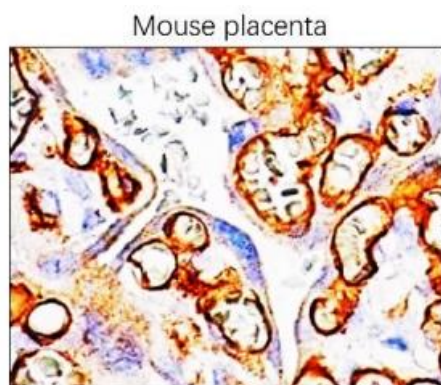


Immunohistochemical of frozen sections.

Sample : mouse tissue.

Mouse CD31 antibody : 1-200

Blue : DAPI was used as the nuclear counter stain.



Immunohistochemical analysis of paraffin embedded mouse placenta tissue labeling mouse CD31 antibody with TACD31-253 at 1/200.

Data from: Li-Tzung Biotechnology. Co