



CD31 antibody

Product name: CD31 antibody

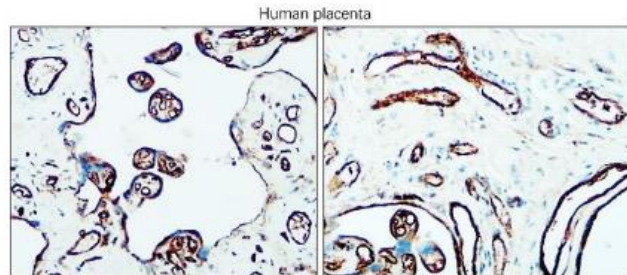
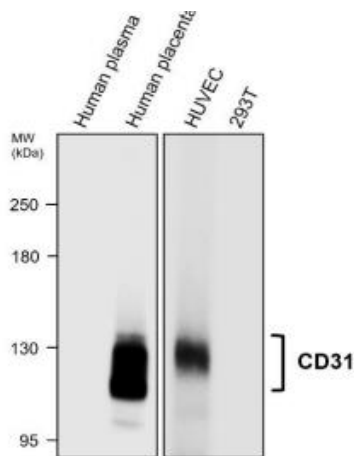
Catalog No.: TACD31-254

Introduction:

Catalog No.	TACD31-254
Size	20µl
Gene Description	platelet/endothelial cell adhesion molecule 1
Clonality	Polyclonal
Host	Rabbit
Species	Human
Recommended Applications Dilutions	Western Blot 1:1000 Immunofluorescence 1:500 - 1:1000 Immunohistochemistry (Paraffin) 1:100 - 1:300 Immunohistochemistry (Frozen) 1:100 - 1:300 Flow Cytometry 1:50 - 1:150
Storage Buffer	100mM Tris Glycine, 20% Glycerol (pH7) 0.025% ProClin 300 was added as a preservative
Concentration	1.5 mg/ml
Purity	Affinity column purified
Storage	Store at 4°C for short term storage. Long time storage is recommended at -20°C
Notes	Gently mix before use. Optimal concentrations and conditions for each application should be determined by the user.

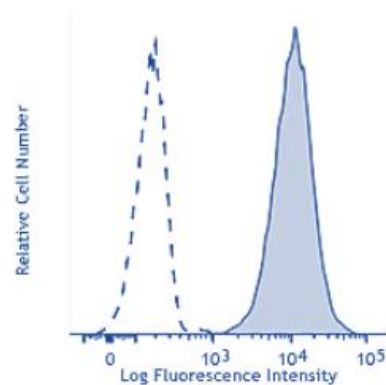
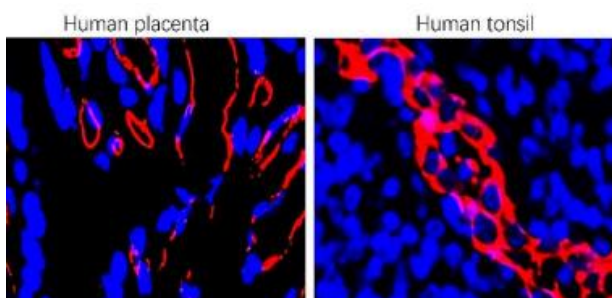
Storage and Stability:

Please read the kit contents and follow the storage condition. The user must validate any other storage conditions. When properly stored, the reagent is stable until the date indicated on the label. Do not use the reagent beyond the expiration date. If unexpected results are observed which cannot be explained by variations in laboratory procedures and a problem with the reagent is suspected, contact Technical: info@biotna.net



Anti - CD31 antibody - at 1/1000 dilution
 Lysate at 35 µg per lane.
 This blot was produced using a 5% SDS-PAGE. Nitrocellulose membrane was then blocked for an hour before being incubated with TACD31-254 overnight at 4°C.

Immunohistochemical analysis of paraffin embedded human placenta tissue labeling CD31 with TACD31-254 at 1/150.



Immunohistochemical of frozen sections.
 Sample : Human tissue
 CD31 antibody : 1-200
 Blue : DAPI was used as the nuclear counter stain.

Human peripheral blood granulocytes were stained with TACD31-254, CD31 antibody (human specific).
 Data from: Li-Tzung Biotechnology. Co